

Port Authority® Zephyr 1/2-Zip Pullover. J343

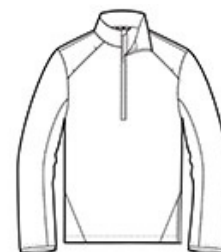


This Zephyr style merges wind- and water-resisting performance with a silky smooth hand. This unlined piece is easy to wear over base or thermal layers. Modern sleek details offer instant appeal at a very appealing price.

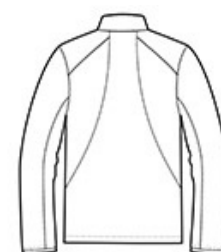
- 100% polyester shell
- Zip-through cadet collar with chin guard
- Set-in sleeves
- Elastic binding at cuffs
- Left side seam zipper for easy on/off
- Open hem with adjustable locking draw cord

CARE INSTRUCTIONS

Machine wash cold with like colors. Do not bleach or use fabric softener. Tumble dry low. Remove promptly. Do not iron. Do not dry clean.

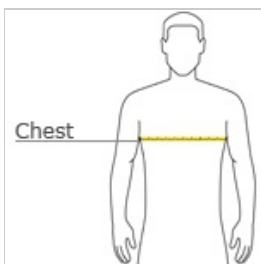


front



back

HOW TO MEASURE



CHEST WIDTH

Measure under the arm and around the fullest part of the chest with arms down, keeping tape horizontal.

SIZE CHART

	XS	S	M	L	XL	2XL	3XL	4XL
Chest	32-34	35-37	38-40	41-43	44-46	47-49	50-53	54-57



Dress Blue Navy
PMS 533C

Port Authority® EZCotton® Polo. K8000



It wasn't easy making EZCotton better, but we did. Still made of soft, smooth, durable 100% cotton pique, our EZCotton Polo boasts an updated fit and a collar that resists curling. It also resists shrinking, wrinkling, pilling and fading with ease.

- 6.2-ounce, 100% cotton
- Flat knit collar and cuffs
- 3-button placket with dyed-to-match buttons
- Side vents

CARE INSTRUCTIONS

Machine Wash Cold With Like Colors. Delicate Cycle Only.
Non-Chlorine Bleach, When Needed. Tumble Dry Low.
Remove Promptly. Warm Iron, If Necessary. Wash And Dry Inside Out.

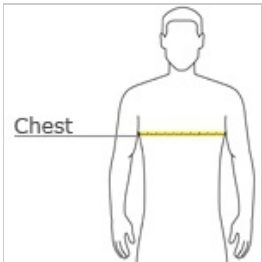


front



back

HOW TO MEASURE



CHEST WIDTH

Measure under the arm and around the fullest part of the chest with arms down, keeping tape horizontal.

SIZE CHART

	XS	S	M	L	XL	2XL	3XL	4XL	5XL	6XL
Chest	32-34	35-37	38-40	41-43	44-46	47-49	50-53	54-57	58-60	63-67



Navy
PMS 533C

Port Authority® EZCotton® Long Sleeve Polo. K8000LS



It wasn't easy making EZCotton better, but we did. Still made of soft, smooth, durable 100% cotton pique, our EZCotton Polo boasts an updated fit and a collar that resists curling. It also resists shrinking, wrinkling, pilling and fading with ease.

- 6.2-ounce, 100% cotton
- Flat knit collar and cuffs
- 3-button placket with dyed-to-match buttons
- Side vents

CARE INSTRUCTIONS

Machine Wash Cold With Like Colors. Delicate Cycle Only.
Non-Chlorine Bleach, When Needed. Tumble Dry Low.
Remove Promptly. Warm Iron, If Necessary. Wash And Dry Inside Out.

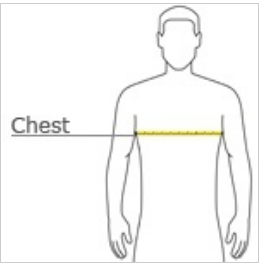


front



back

HOW TO MEASURE



CHEST WIDTH
Measure under the arm and around the fullest part of the chest with arms down, keeping tape horizontal.

SIZE CHART

	XS	S	M	L	XL	2XL	3XL	4XL
Chest	32-34	35-37	38-40	41-43	44-46	47-49	50-53	54-57



Navy
PMS 533C